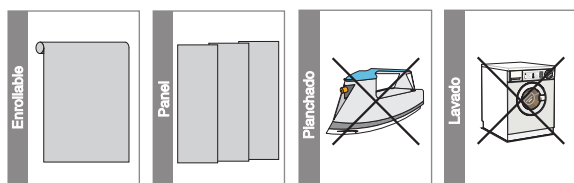


Nature

Nature



	Tokio	Shanghai
Composición	Fibras Naturales	Fibras Naturales
Peso	270 gr/m ² ±10	180 a 275 gr/m ² ±10
Espesor	0,85 m/m ± 0,05	0,50 a 0,70 m/m ± 0,05
Clasificación	-	-
Ancho Bobina	200 cm	180 cm
Termosoldable	No	No

	Manila	Taipei
Composición	Fibras Naturales	Fibras Naturales
Peso	195 gr/m ² ±10	365 gr/m ² ±10
Espesor	0,60 m/m ± 0,05	0,65 m/m ± 0,05
Clasificación	-	-
Ancho Bobina	180 cm	180 cm
Termosoldable	No	No

Shanghai



SHA-101

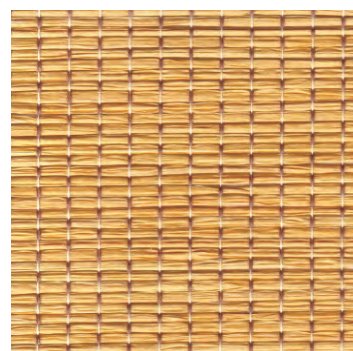


SHA-03

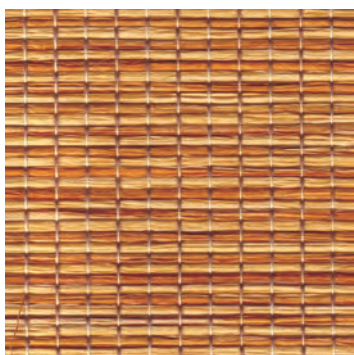


SHA-203

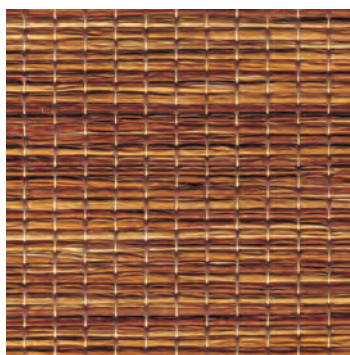
Tokio



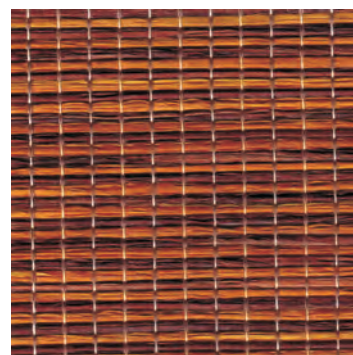
TOK-73



TOK-13



TOK-23

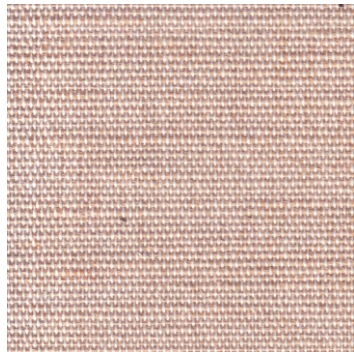


TOK-33

Taipei



TAI-03



TAI-13

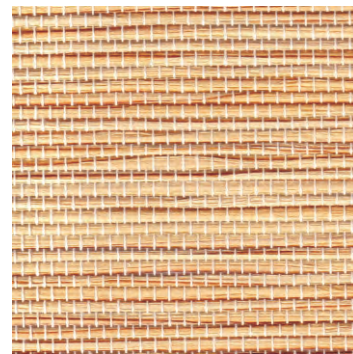


TAI-32

Manila



MAN-01



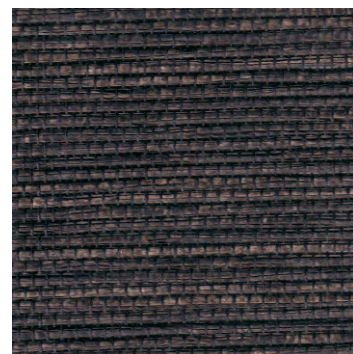
MAN-13



MAN-73



MAN-23



MAN-32