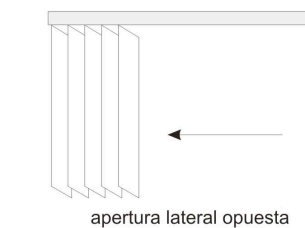
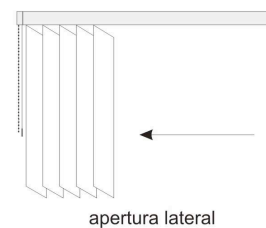
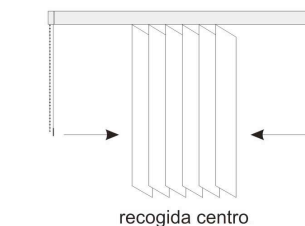
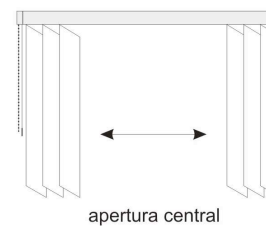
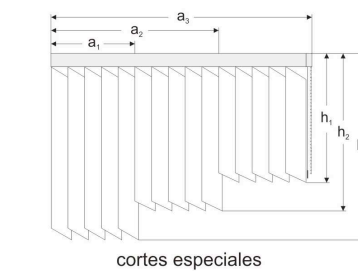
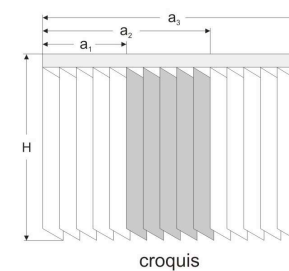
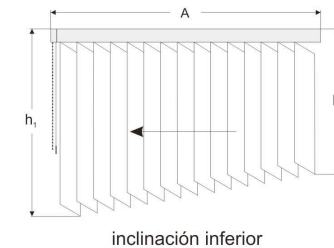
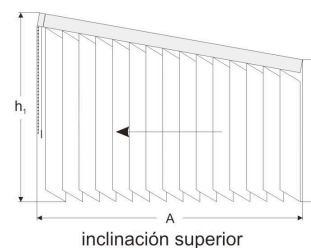
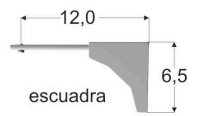
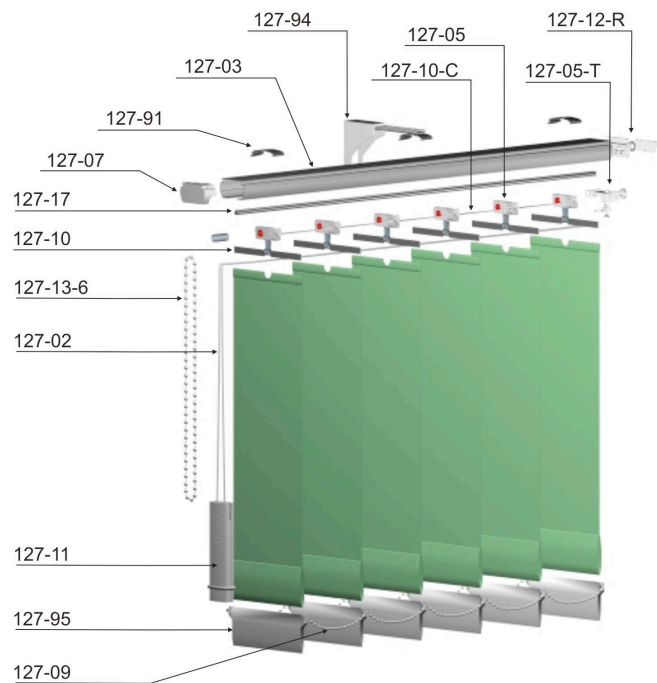


Vertical

DECOREX

PROTECCION SOLAR S.L.





Perfiles

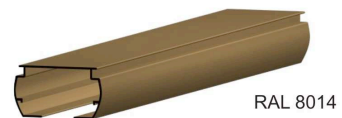


RAL 9010

Referencia	Descripción	Und. Caja
127-03-01	Perfil aluminio	120 ml
127-03-03	Perfil aluminio	120 ml
127-03-33	Perfil aluminio	120 ml
127-03-29	Perfil aluminio	120 ml
127-03-46	Perfil aluminio	120 ml
127-03-52	Perfil aluminio	120 ml
127-03-42	Perfil aluminio	120 ml



RAL 1015



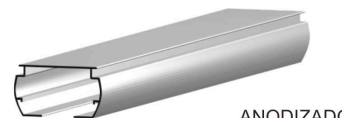
RAL 8014



RAL 3005



RAL 6005

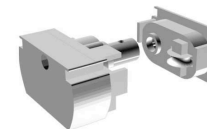


ANODIZADO

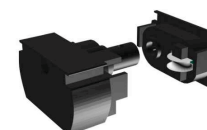
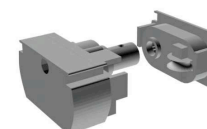
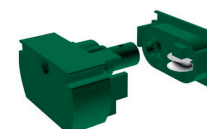
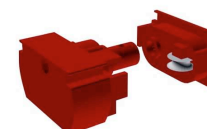
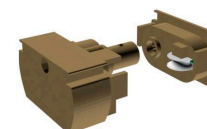
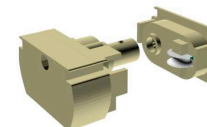


RAL 9011

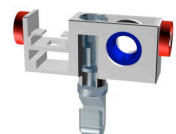
Grupos de mando



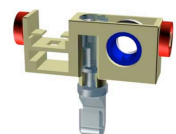
Referencia	Descripción	Und. Caja
127-07-01	Grupo de mando	100
127-07-03	Grupo de mando	100
127-07-33	Grupo de mando	100
127-07-29	Grupo de mando	100
127-07-46	Grupo de mando	100
127-07-72	Grupo de mando	100
127-07-42	Grupo de mando	100



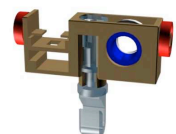
Carros distanciador plástico



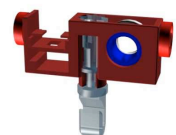
Referencia	Descripción	Und. Caja
127-05-01	Carro distanciador Plástico	2.500



127-05-03	Carro distanciador Plástico	2.500
-----------	-----------------------------	-------



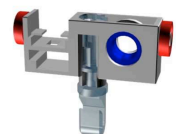
127-05-33	Carro distanciador Plástico	2.500
-----------	-----------------------------	-------



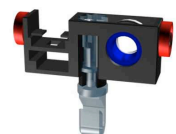
127-05-29	Carro distanciador Plástico	2.500
-----------	-----------------------------	-------



127-05-46	Carro distanciador Plástico	2.500
-----------	-----------------------------	-------

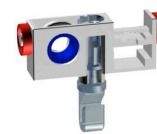


127-05-72	Carro distanciador Plástico	2.500
-----------	-----------------------------	-------

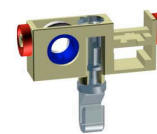


127-05-42	Carro distanciador Plástico	2.500
-----------	-----------------------------	-------

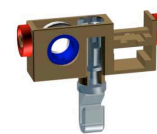
Carros distanciador metálico



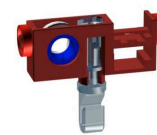
Referencia	Descripción	Und. Caja
127-05-DM-01	Carro distanciador metálico	2.500



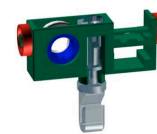
127-05-DM-03	Carro distanciador metálico	2.500
--------------	-----------------------------	-------



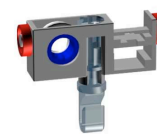
127-05-DM-33	Carro distanciador metálico	2.500
--------------	-----------------------------	-------



127-05-DM-29	Carro distanciador metálico	2.500
--------------	-----------------------------	-------



127-05-DM-46	Carro distanciador metálico	2.500
--------------	-----------------------------	-------

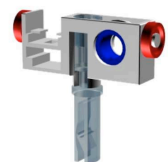


127-05-DM-72	Carro distanciador metálico	2.500
--------------	-----------------------------	-------

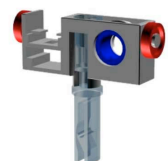


127-05-DM-42	Carro distanciador metálico	2.500
--------------	-----------------------------	-------

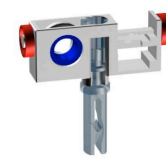
Carros PVC distanciador plástico



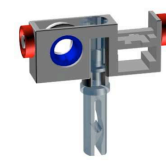
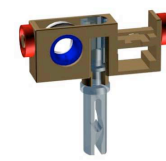
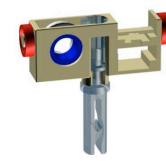
Referencia	Descripción	Und. Caja
127-05-pvc-01	Carro PVC distanciador Plástico	2.500
127-05-pvc-03	Carro PVC distanciador Plástico	2.500
127-05-pvc-33	Carro PVC distanciador Plástico	2.500
127-05-pvc-29	Carro PVC distanciador Plástico	2.500
127-05-pvc-46	Carro PVC distanciador Plástico	2.500
127-05-pvc-72	Carro PVC distanciador Plástico	2.500
127-05-pvc-42	Carro PVC distanciador Plástico	2.500



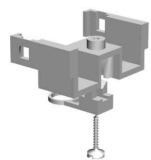
Carros PVC distanciador metálico



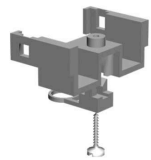
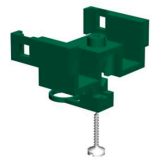
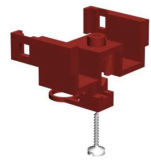
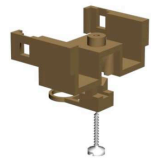
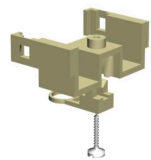
Referencia	Descripción	Und. Caja
127-05-pvc-DM-01	Carro PVC distanciador metálico	2.500
127-05-pvc-DM-03	Carro PVC distanciador metálico	2.500
127-05-pvc-DM-33	Carro PVC distanciador metálico	2.500
127-05-pvc-DM-29	Carro PVC distanciador metálico	2.500
127-05-pvc-DM-46	Carro PVC distanciador metálico	2.500
127-05-pvc-DM-72	Carro PVC distanciador metálico	2.500
127-05-pvc-DM-42	Carro PVC distanciador metálico	2.500



Carros de tracción



Referencia	Descripción	Und. Caja
127-05-T-01	Carro de tracción	500
127-05-T-03	Carro de tracción	500
127-05-T-33	Carro de tracción	500
127-05-T-29	Carro de tracción	500
127-05-T-46	Carro de tracción	500
127-05-T-72	Carro de tracción	500
127-05-T-42	Carro de tracción	500



Carros centrales



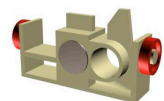
Referencia	Descripción	Und. Caja
127-05-cc-01	Carro central	500
127-05-cc-03	Carro central	500
127-05-cc-33	Carro central	500
127-05-cc-29	Carro central	500
127-05-cc-46	Carro central	500
127-05-cc-72	Carro central	500
127-05-cc-42	Carro central	500



Carros magnéticos



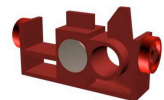
Referencia	Descripción	Und. Caja
127-05-MG-01	Carro magnético	500



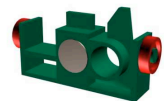
127-05-MG-03	Carro magnético	500
--------------	-----------------	-----



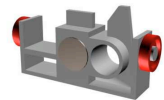
127-05-MG-33	Carro magnético	500
--------------	-----------------	-----



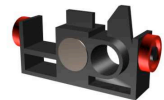
127-05-MG-29	Carro magnético	500
--------------	-----------------	-----



127-05-MG-46	Carro magnético	500
--------------	-----------------	-----



127-05-MG-72	Carro magnético	500
--------------	-----------------	-----

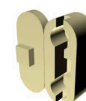


127-05-MG-42	Carro magnético	500
--------------	-----------------	-----

Conectores cadena



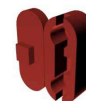
Referencia	Descripción	Und. Caja
127-14-01	Conector cadena	1.000



127-14-03	Conector cadena	1.000
-----------	-----------------	-------



127-14-33	Conector cadena	1.000
-----------	-----------------	-------



127-14-29	Conector cadena	1.000
-----------	-----------------	-------



127-14-46	Conector cadena	1.000
-----------	-----------------	-------



127-14-72	Conector cadena	1.000
-----------	-----------------	-------



127-14-42	Conector cadena	1.000
-----------	-----------------	-------

Tensor de cordón 48 grm



127-11-01 Tensor de cordón 48 grm 150



127-11-03 Tensor de cordón 48 grm 150



127-11-33 Tensor de cordón 48 grm 150



127-11-29 Tensor de cordón 48 grm 150



127-11-46 Tensor de cordón 48 grm 150



127-11-72 Tensor de cordón 48 grm 150



127-11-42 Tensor de cordón 48 grm 150

Tensor de cordón 185 grm.



127-11-3-01 Tensor de cordón 185 grm. 50



127-11-3-03 Tensor de cordón 185 grm. 50



127-11-3-33 Tensor de cordón 185 grm. 50



127-11-3-29 Tensor de cordón 185 grm. 50



127-11-3-46 Tensor de cordón 185 grm. 50



127-11-3-72 Tensor de cordón 185 grm. 50



127-11-3-42 Tensor de cordón 185 grm. 50

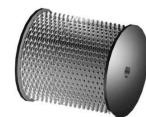
Cordón 2 m/m



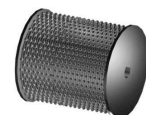
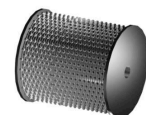
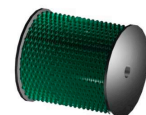
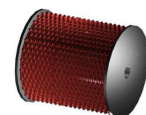
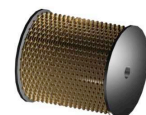
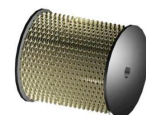
Referencia	Descripción	Und. Caja
127-02-01	Cordón 2 m/m	500 ml
127-02-03	Cordón 2 m/m	500 ml
127-02-33	Cordón 2 m/m	500 ml
127-02-29	Cordón 2 m/m	500 ml
127-02-46	Cordón 2 m/m	500 ml
127-02-72	Cordón 2 m/m	500 ml
127-02-42	Cordón 2 m/m	500 ml
127-02-21	Cordón 2 m/m bicolor	500 ml



Cadena 4,5 x 6



Referencia	Descripción	Und. Caja
127-13-6-01	Cadena de mando 4,5 x 6	250 ml
127-13-6-03	Cadena de mando 4,5 x 6	250 ml
127-13-6-33	Cadena de mando 4,5 x 6	250 ml
127-13-6-29	Cadena de mando 4,5 x 6	250 ml
127-13-6-46	Cadena de mando 4,5 x 6	250 ml
127-13-6-72	Cadena de mando 4,5 x 6	250 ml
127-13-6-42	Cadena de mando 4,5 x 6	250 ml



Componentes comunes



127-17 Eje de tres vías 120 ml



127-12-C Anillo fijación comando 1.000



127-12-SC Anillo fijación carro 1.000



127-10-C Distanciador plástico 127 500



89-10-C Distanciador plástico 89 500



89-10-CP Clip ajuste distanciador plástico 5.000



127-10-ML Distanciador metálico 5.000



127-10-P Percha plástica 127 1.000



89-10-P Percha plástica 89 1.000

Componentes comunes



127-05-TP Pletina carro tracción 250



127-12-R Arandela retén 1.000



127-12-CP Circlis plástico 500



127-95-P Peso plástico 127 250



89-95-P Peso plástico 89 500



127-09-P Cadenilla plástica blanca 127 500 ml



89-09-P Cadenilla plástica banca 89 500 ml



127-94 Escuadra 100



127-91 Soporte de techo 500