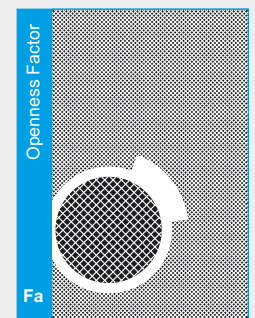
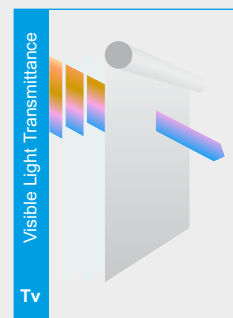
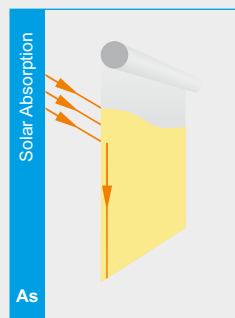
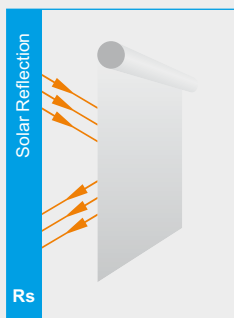
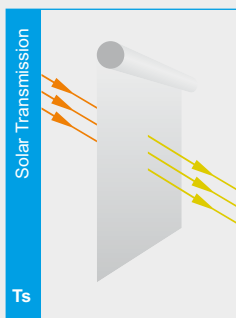


# Fabric Alu-Screen

DECOREX

PROTECCION SOLAR S.L.





## Fabric Width

230 cm

AL-01

AL-103

AL-102

AL-22

AL-42

AL-32

AL-122

AL-142

AL-01

AL-103

AL-102

AL-22

AL-42

AL-32

AL-122

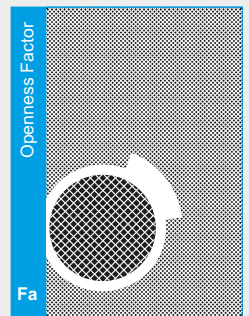
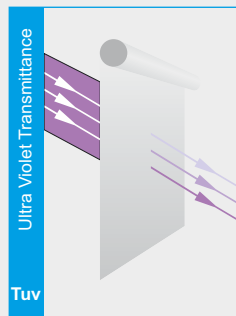
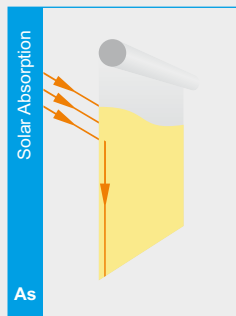
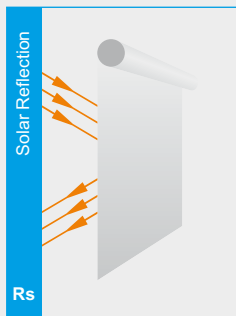
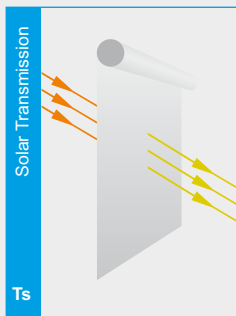
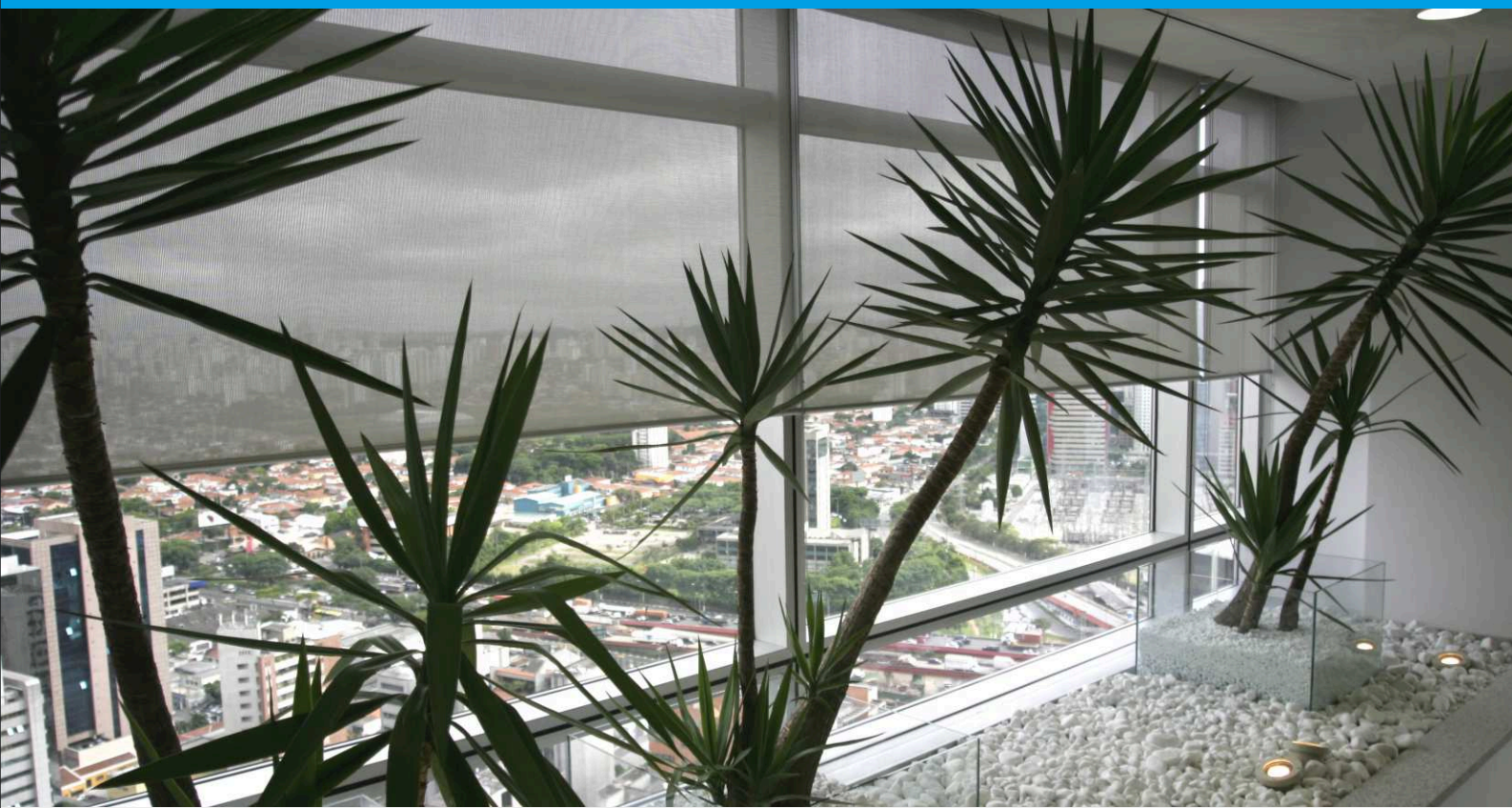
AL-142



# Fabric Screen 3.2



PROTECCION SOLAR S.L.



## Screen 3.2

Composition	35% Polyester / 65% PVC
Fabric Weight	320 g/m <sup>2</sup> ± 5%
Fabric Thickness	0,45 m/m ± 5%
Flammability	Class B1 / M1
Fabric Width	200 - 250 - 300 cm
Heat Weldable	Yes
Yarn Count	18 x 18 ± 5%
Tensile Strength	Warp 150 daN - Weft 120 daN / 5 cm
Tearing Strenght	Warp 4,5 daN - Weft 6,9 daN
Openness Factor	3%
Colourfastness to Light	8
Human Ecology	Oeko-tex 100 class IV
Health / Safety	Anti Bacteria ASTM G21 - ASTM G22

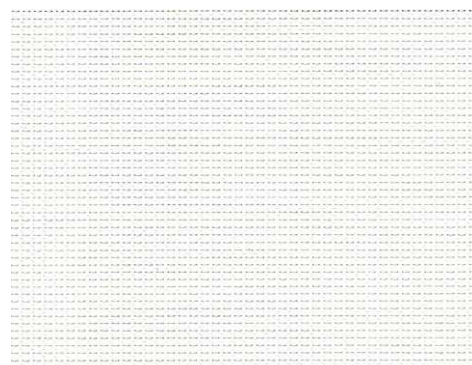
Screen-3.2

	SC3-01	SC3-103	SC3-102	SC3-122	SC3-22	SC3-33	SC3-42
Ts	22	21	19	17	10	4	4
Rs	65	59	55	51	35	5	4
As	13	20	26	32	55	91	92
Tuv	3	5	4	5	2	3	3
Tv	18	19	17	16	8	4	4
Fa	3	3	3	3	3	3	3

## Fabric Width

	SC3-01	SC3-103	SC3-102	SC3-122	SC3-22	SC3-33	SC3-42
200 cm							
250 cm							
300 cm							
8,9 cm							
12,7 cm							

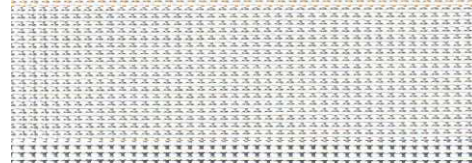
SC3-01



SC3-103



SC3-102



SC3-122



SC3-22



SC3-33



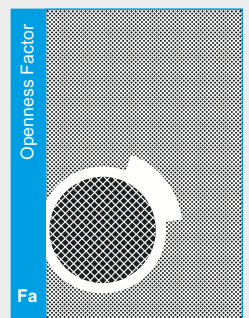
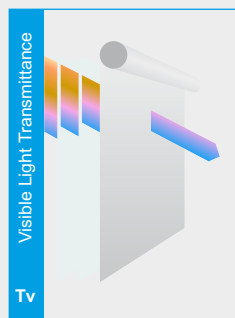
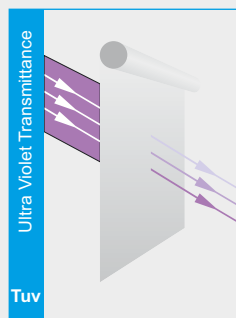
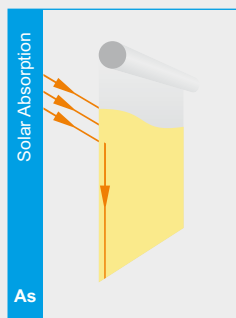
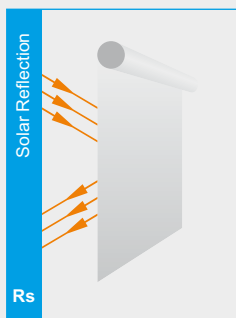
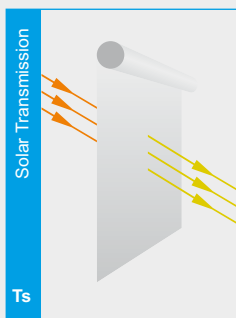
SC3-42



# Fabric Screen 4.1

**DECOREX**

PROTECCION SOLAR S.L.





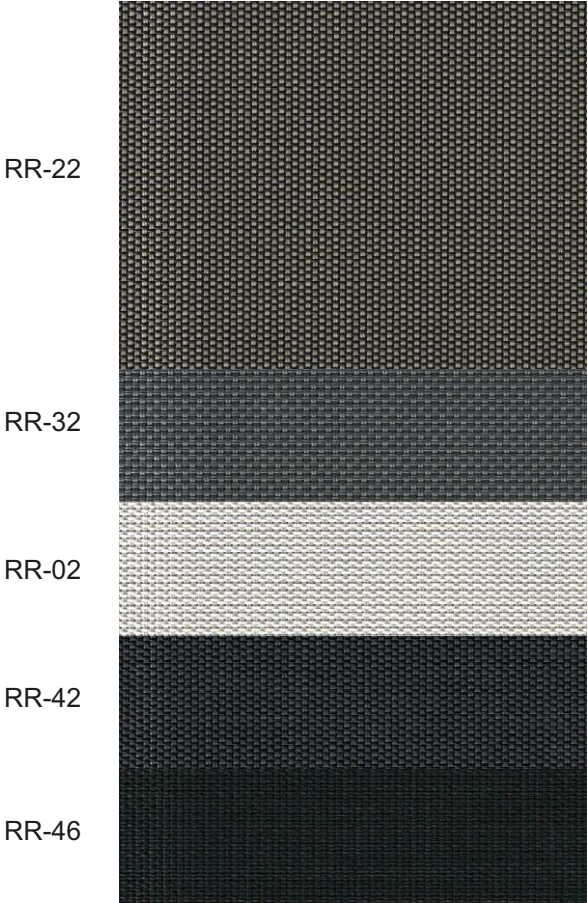
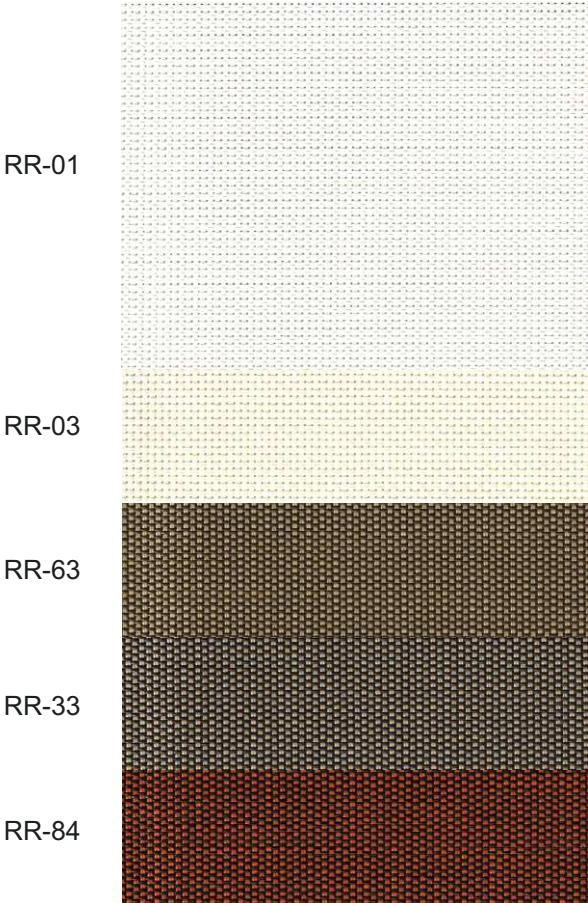


Composition	25% Polyester / 75% PVC
Fabric Weight	410 g/m <sup>2</sup> ± 5%
Fabric Thickness	0,57 m/m ± 5%
Flammability	Class B1 / M1
Fabric Width	160 - 220 - 250 - 300 cm
Heat Weldable	Yes
Yarn Count	19 x 19 ± 5%
Tensile Strength	Warp 152 daN - Weft 180 daN / 5 cm
Tearing Strenght	Warp 4,7 daN - Weft 5,0 daN
Openness Factor	3% - 5%
Colourfastness to Light	8
Human Ecology	Oeko-tex 100 class IV
Health / Safety	Anti Bacteria ASTM G21 - ASTM G22

# Screen 4.1

Fabric Width

	RR-01	RR-03	RR-63	RR-33	RR-84	RR-22	RR-32	RR-02	RR-42	RR-46
160 cm										
220 cm										
250 cm										
300 cm										
8,9 cm										
12,7 cm										

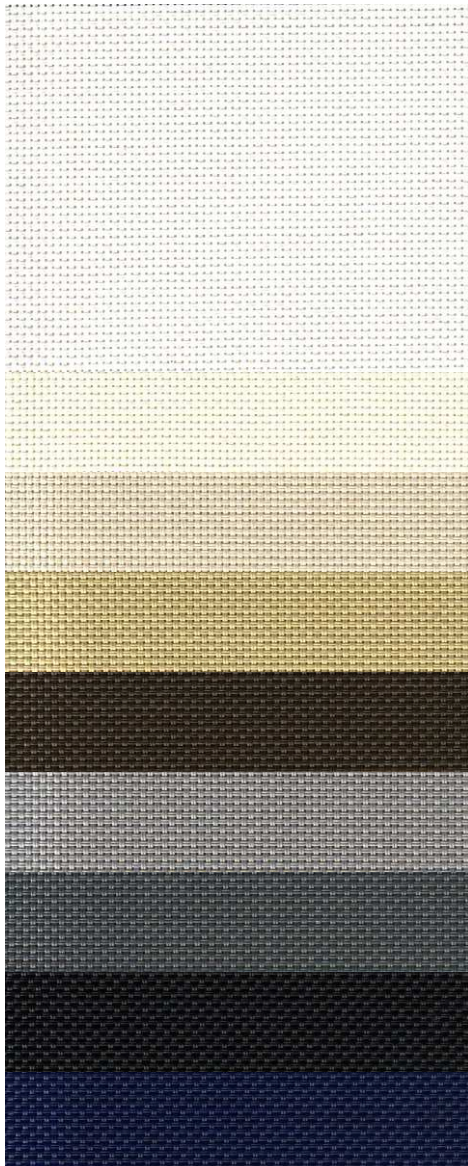


## Screen 4.1

### Fabric Width

160 cm	SC4-01	SC4-03	SC4-13	SC4-73	SC4-33	SC4-22	SC4-32	SC4-42	SC4-38
220 cm									
250 cm									
300 cm									
8,9 cm									
12,7 cm									
160 cm	SC4-101	SC4-103	SC4-173	SC4-133	SC4-112	SC4-122	SC4-132	SC4-162	SC4-142
220 cm									
250 cm									
300 cm									
8,9 cm									
12,7 cm									

SC4-01



SC4-101



SC4-03

SC4-103

SC4-13

SC4-173

SC4-73

SC4-133

SC4-33

SC4-112

SC4-22

SC4-122

SC4-32

SC4-132

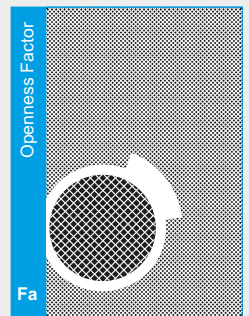
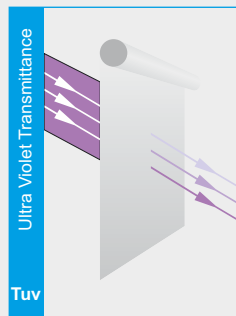
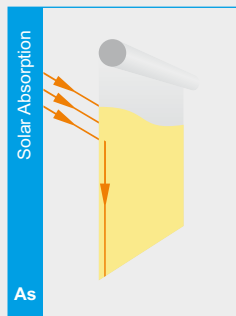
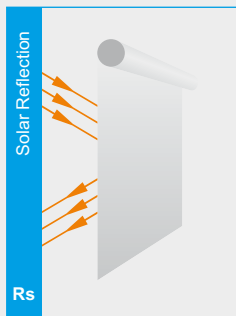
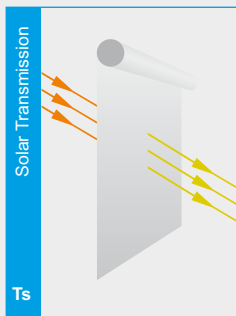
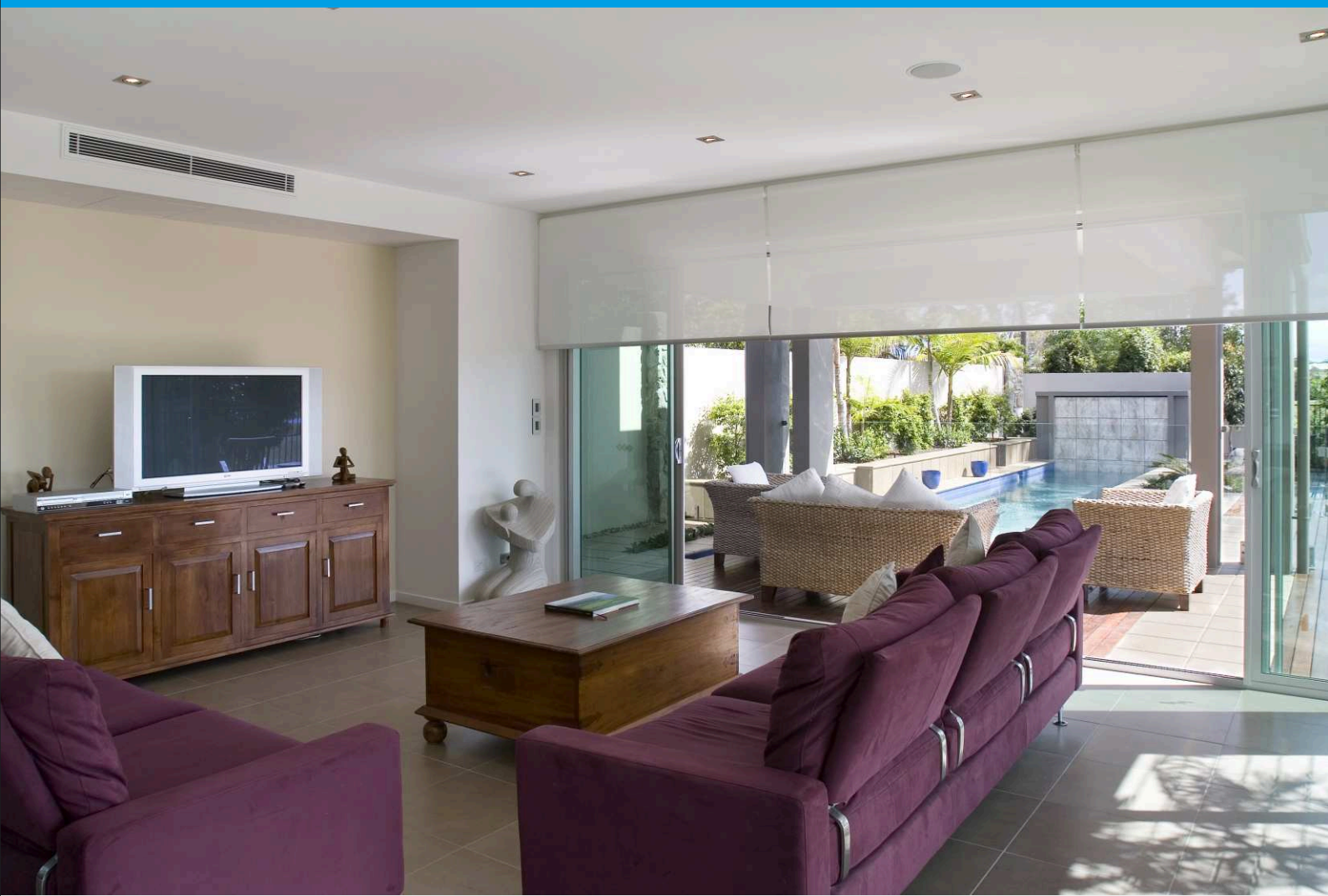
SC4-42

SC4-162

SC4-38

SC4-142

# Fabric Screen 5.2



## Screen 5.2

Composition	27% Polyester / 73% PVC
Fabric Weight	520 g/m <sup>2</sup> ± 5%
Fabric Thickness	0,70 m/m ± 5%
Flammability	Class B1 / M1
Fabric Width	160 - 220 - 250 - 300 cm
Heat Weldable	Yes
Yarn Count	14 x 14 ± 5%
Tensile Strength	Warp 215 daN - Weft 225 daN / 5 cm
Tearing Strenght	Warp 12,4 daN - Weft 13,8 daN
Openness Factor	5%
Colourfastness to Light	8
Human Ecology	Oeko-tex 100 class IV
Health / Safety	Anti Bacteria ASTM G21 - ASTM G22

### Screen 5.2

	SC5-01	SC5-03	SC5-73	SC5-33	SC5-38	SC5-22	SC5-32	SC4-42
Ts	16	14	10	5	5	8	5	5
Rs	67	51	44	8	21	31	8	8
As	17	35	46	87	74	61	87	87
Tuv	4	6	5	5	4	6	5	5
Tv	11	11	7	6	5	7	6	6
Fa	5	5	5	5	5	5	5	5

### Screen 5.2

	SC5-101	SC5-173	SC5-122	SC5-132	SC5-106
Ts	14	12	7	10	9
Rs	57	47	45	39	42
As	29	41	48	51	49
Tuv	4	6	3	6	5
Tv	9	9	5	8	9
Fa	3	5	3	5	5

## Screen 5.2

### Fabric Width

	SC5-01	SC5-03	SC5-73	SC5-33	SC5-38	SC5-22	SC5-32	SC4-42
160 cm								
220 cm								
250 cm								
300 cm								
8,9 cm								
12,7 cm								
	SC5-101	SC5-173	SC5-122	SC5-132	SC5-106			
160 cm								
220 cm								
250 cm								
300 cm								
8,9 cm								
12,7 cm								

SC5-01

SC5-03

SC5-73

SC5-33

SC5-38

SC5-22

SC5-32

SC5-42

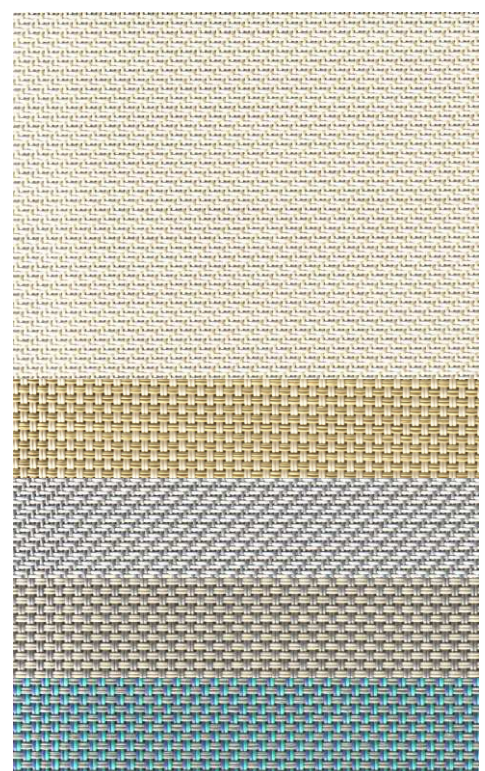
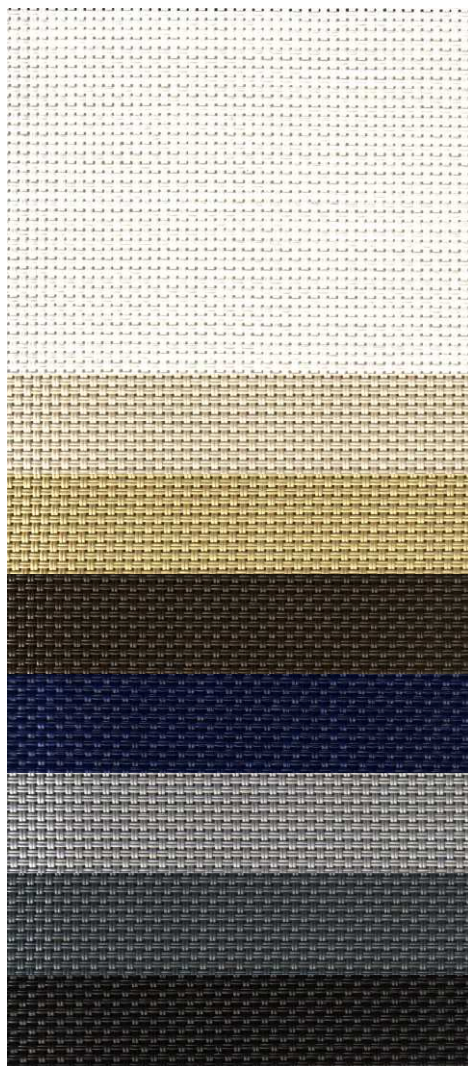
SC5-101

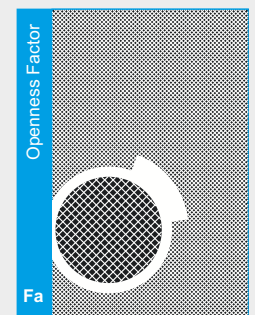
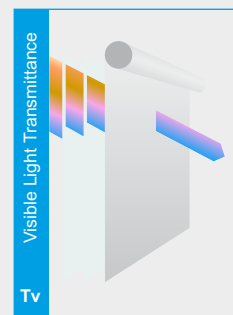
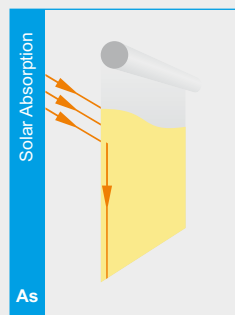
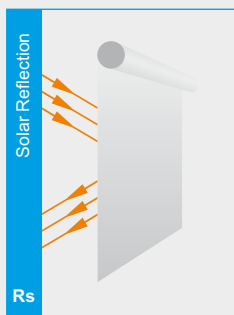
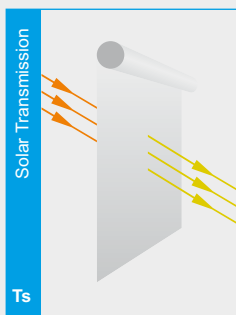
SC5-173

SC5-122

SC5-132

SC5-106





	W	WL
Composition	100% pes	100% pes
Fabric Weight	145,2 g/m <sup>2</sup>	163,7 g/m <sup>2</sup>
Fabric Thickness	0,31 m/m	0,33 m/m
Flammability	-	-
Fabric Width	250 - 300 cm	250 - 300 cm
Heat Weldable	Yes	Yes
Yarn Count	25 x 37 / 5cm	25,4 x 45 / 5cm
Tensile Strength	29,1 - 158,5 daN / 5 cm	31,1 - 196,9 daN / 5 cm
Tearing Strenght	1,8 - 5,3 daN	1,6 - 4,1 daN
Openness Factor	20%	20%
Colourfastness to Light	8	8

## View

	W-01	W-13	W-72	W-33	W-42	WL-01	WL-13	WL-72	WL-33	WL-42
Ts	56	52	44	30	29	50	47	38	23	22
Rs	38	34	25	4	3	42	38	28	4	3
As	6	14	31	66	68	8	15	34	73	75
Tuv	34	33	30	26	26	27	26	25	20	19
Tv	54	52	46	35	36	48	46	40	29	28
Fa	29	28	27	27	26	21	22	22	21	21



Fabric Width

250 cm

300 cm



W-01

W-13

W-72

W-33

W-42



WL-01

WL-13

WL-72

WL-33

WL-42

