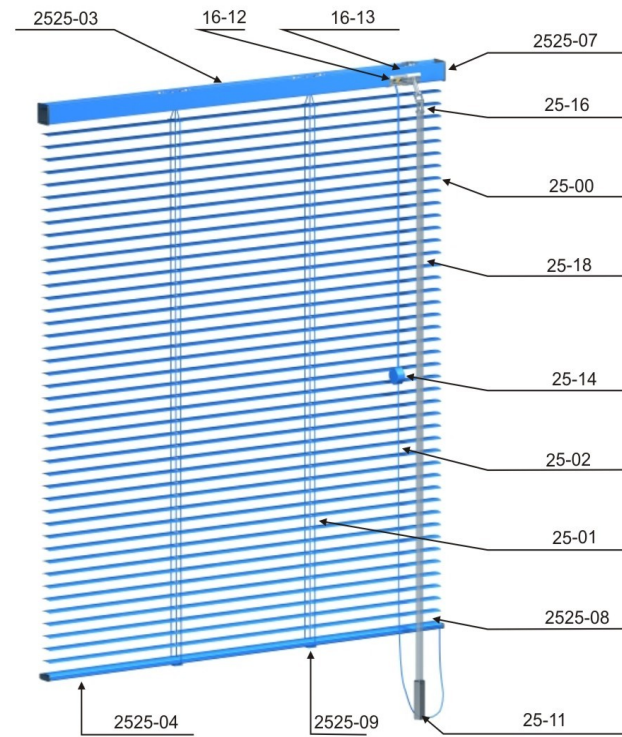
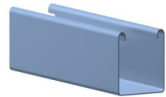


# Venetian Blind





Reference	Description	Units. Box
2525-03	Head rail 24 x 25	120 lm.
2525-04	C Bottom rail 20 x 10	120 lm.
25-17	D tilt rod	400 lm.
2525-05	Tilt rod support 24 x 25	2.500
2525-07	Transparent head rail end cap 24 x 25	500
2525-08	C transparent bottom rail end cap 20 x 10	1.000



Reference	Description	Units. Box
25-16	Cardan joint	1.000
2525-10	Slat clip 25 m/m	3.000
20-16	Slat clip 16 m/m	3.000
2525-09	Transparent terylene end cap 6,6 m/m	3.000
16-12	Cord lock	500
16-13	Tilter cardan	500

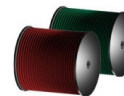
# Venetian Blind



Reference	Description	Units. Box
25-94	Wall extending bracket	300
25-18	Control rod	300 lm.
25-11	Control rod end cap	1.000
25-14	Cord union	1.000
2525-90	Wall bracket 24 x 25	500
2525-91	Ceiling bracket 24 x 25	1.000

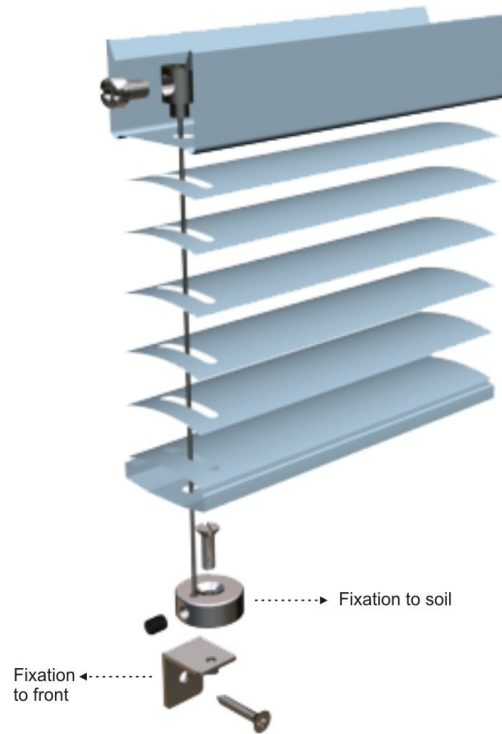


Reference	Description	Units. Box
25-01	Ladder cord 25 m/m	400 lm.
16-01	Ladder cord 16 m/m	400 lm.
25-02	Cord 1,4	1.000 lm.





# Guide system



Reference	Description	Units. Box
71-05	Wall bracket	500
71-06	Screw M3 x 10	2.000
71-03	Screw 2,9 x 16	500
71-04	Screw M4 x 4	1.000
71-02	Stretcher for side guiding	500
71-01	Prisoner screw	500
71-11	Steel spring 1 m/m	1.000 lm.

# Venetian Blind



Reference	Description	Units. Box
70-01	Knob	500
70-02	Base	500
70-03	Axis	500



## *In between glass system*



Reference	Description	Units. Box
70-05	Retaining	500
70-07	Screw	1.000
70-04	Joint	500
70-06	Screw M3 x 8	1.000
70-08	Screw M3 x 3	1.000
70-09	Turn top	1.000



Reference	Description	Units. Box
70-11	Steel spring	500 Im.
70-14	Sheating	150 Im.

