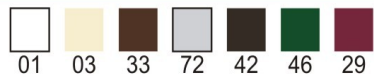
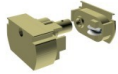


## *Vertical Blind*





Reference	Description	Units. Box
127-03	Aluminium head rail	120 lm.
127-07	End cap set	100
127-05	Carrier plastic link	2.500
127-05-DM	Carrier inox link	2.500
127-05-PVC	Carrier p.v.c. plastic link	2.500
127-05-PVC - DM	Carrier p.v.c. inox link	2.500

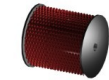


Reference	Description	Units. Box
127-05-T	Master carrier	500
127-05-CC	Carrier for central opening	500
127-05-MG	Magnetic carrier	500
127-14	Ball chain connector	1.500
127-11	Weight for cord 48 grm	150
127-11-3	Weight for cord 185 grm	50

# Vertical Blind



Reference	Description	Units. Box
127-02	Cord 2 m/m	500 lm
127-13-6	Control ball chain 4,5 x 6	250 lm
127-17	Tilt rod 3 way	120 lm
127-12-C	Stop plastic seeger	1.000
127-12-SC	Stop carrier seeger	1.000
127-10-C	Plastic link 127	500
89-10-C	Plastic link 89	500



Reference	Description	Units. Box
89-10-CP	Clip plastic link	5.000
127-10-ML	Inox link	5.000
127-10-P	Plastic slat holder 127	1.000
89-10-P	Plastic slat holder 89	1.000
127-05-TP	Support for magnet	250
127-12-R	Retaining washer	1.000
127-12-CP	Plastic seeger	50
127-95-P	Plastic slat weight 127	250
89-95-P	Plastic slat weight 89	500

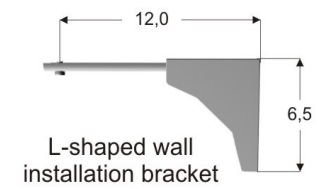
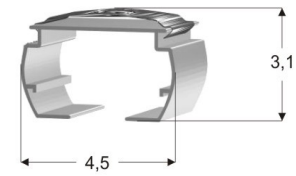




Reference	Description	Units. Box
127-09-P	Connecting ball chain 127	500 lm.
89-09-P	Connecting ball chain 89	500 lm.
127-94	L-shaped wall installation bracket	100
127-91	Installation clip bracket	500



Intallation clip bracket  
head rail



# *Vertical Blind*

