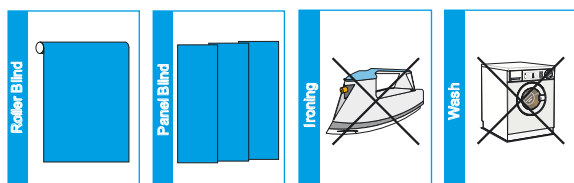


Characteristics



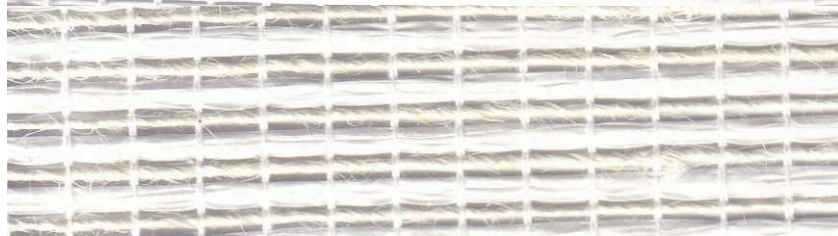
	Tokio	Shanghai
Composition	Natural Fibers	Natural Fibers
Fabric Weight	270 gr/m ² ±10	180 a 275 gr/m ² ±10
Fabric Thickness	0,85 m/m ± 0,05	0,50 a 0,70 m/m ± 0,05
Flammability	-	-
Fabric Width	200 cm	180 cm
Heat Weldable	No	No

	Manila	Taipei
Composition	Natural Fibers	Natural Fibers
Fabric Weight	195 gr/m ² ±10	365 gr/m ² ±10
Fabric Thickness	0,60 m/m ± 0,05	0,65 m/m ± 0,05
Flammability	-	-
Fabric Width	180 cm	180 cm
Heat Weldable	No	No

SHA-01



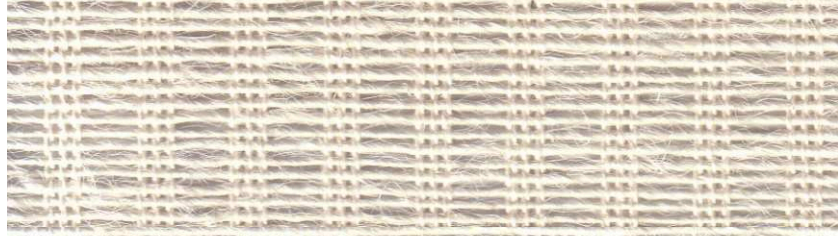
SHA-101



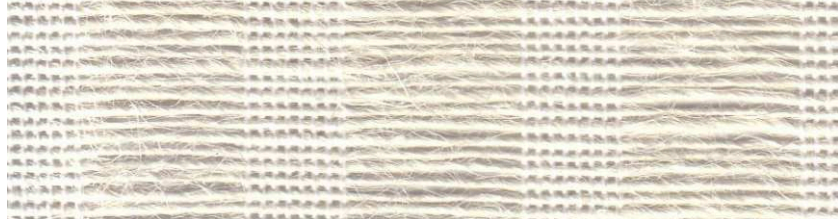
SHA-03



SHA-103



SHA-203



Fabric Tokio

TOK-73

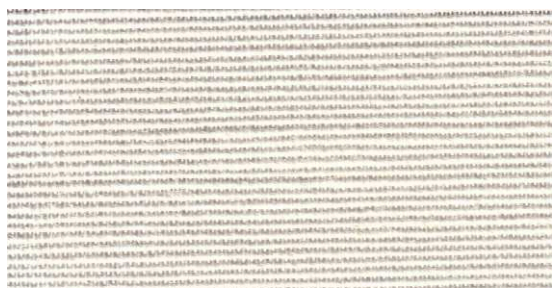
TOK-13

TOK-23

TOK-33



Taipei



TAI-03



TAI-13

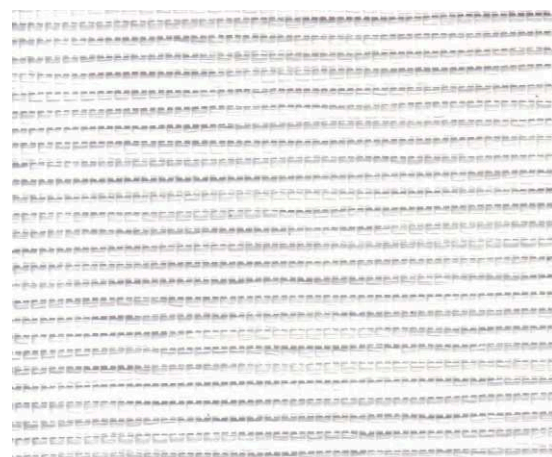


TAI-32



MAN-01

Manila



MAN-13



MAN-73



MAN-23



MAN-32